

57

LOBSTER

solaris *POWER*

DAL 1974 PER CHI NAVIGA

TECHNICAL  
SPECIFICATIONS

# 57 LOBSTER

## TECHNICAL SPECIFICATIONS

LENGTH OVERALL	17,50 m / 57'40"
WATER LINE LENGTH	15,40 m / 50'52"
BEAM	5,28 m / 17'32"
DRAFT	1,29 m / 4'23"
APPROX. LIGHT DISPLACEMENT	23.000 kg / 50,706 lbs
APPROX. LOAD DISPLACEMENT	26.000 kg / 57,320 lbs
FUEL CAPACITY	2.200 L / 581 US gal
WATER CAPACITY	600 L / 159 US gal
ENGINES	2 x Volvo Penta D8 IPS 800 441 kW / 600 hp 3000 rpm 2 x Volvo Penta D11 IPS 950 533 kW / 725 hp 2500 rpm
MAX SPEED	30 kn - IPS 800 / 35 kn - IPS 950
CRUISING SPEED	23 kn - IPS 800 / 26 kn - IPS 950
CABINS	2 / 3 / 4
BATHROOMS	2
MAX PERSONS CAPACITY	12
DESIGN	Brunello Acampora / Victory Design Cav. Norberto Ferretti Solaris Power Design Team

# 57

NO BOAT MATCHES  
THIS COMBINATION OF  
FEATURES

THE ONLY LOBSTER BOAT FEATURING  
WALKAROUND DECKS, HELMSMAN'S SIDE  
DOOR AND FOLD-OUT BULWARKS.

L  
O  
B  
S  
T  
E  
R

# THE GREAT SEAGOING CAPABILITIES OF SOLARIS POWER

## SMOOTH SAILING THROUGH THE WAVES AND A DRY DECK IN CHOPPY SEAS

The sharp shape of the bow and the pronounced flare, softens the passage through the waves and keeps the deck dry.

## GREAT STABILITY WHILE CRUISING AND AT ANCHOR

The hull shape guarantees great stability and comfort when cruising and at anchor, without the need for stabilizers.

## LOW FUEL CONSUMPTION RESULTING IN EXCELLENT RANGE

The advanced studies on the shapes of the hull, ensure low fuel consumption, resulting in excellent range and reduced CO<sub>2</sub> emissions. One example, the 48 Open at a cruising speed of 26 knots only needs 4.8 litres per mile.

## EFFICIENT CRUISING BOTH IN DISPLACEMENT AND IN PLANING MODE

Unlike ordinary boats with planing hulls, Solaris Power are capable to cruise steadily and without roll even in displacement mode from 10 to 14 knots.



## THE LATEST PROPULSION TECHNOLOGY

Solaris Power yachts feature cutting-edge propulsion working in synergy with the shape of the hull. This is the outcome of intense collaboration between Victory Design and Volvo Penta. Since 2005 Brunello Acampora has been studying shapes that are optimised for the

IPS, including 'azimuth pods' for planing hulls; having found they generate huge performance improvements. Moreover, the compactness of the propulsion apparatus yields a noticeable increase of living space: the interiors of these boats compare favourably with much bigger

yachts, and make the tender easy to stow, launch and haul.

## EASY DOCKING THANKS TO THE JOYSTICK

Docking manoeuvres are simplified thanks to the joystick and the azimuth pods, even with a single person at the controls.

## LOW NOISE LEVEL AND ZERO VIBRATIONS

The absence of the rotating masses of the shaft line and the engine exhausts in the propeller pods ensure absence of vibrations and low noise.

## SPACIOUS AND WELL VENTILATED ENGINE ROOM

Offering easy access to the engine itself and to the other systems.

## INNOVATIONS FOR MORE ON-BOARD COMFORT

---



### WALKAROUND

---

The decks of all models include lateral walkways that afford easy and safe movement from bow to stern.



### VERY LARGE SUNBEDS

---

All Solaris Power have the bow sundeck. Open models also offer an aft sundeck.



### TENDER GARAGE

---

Under the aft opening sundeck there is a large garage that can be used for the tender and various water toys.



### FOLD-OUT BULWARKS

---

These can be opened for enhanced enjoyment of the cockpit, increasing its surface by 20%.



### HYDRAULIC GANGWAY

---

The hydraulic gangway turns into a comfortable swim ladder.



### LAYOUT IN MULTIPLE VERSIONS

---

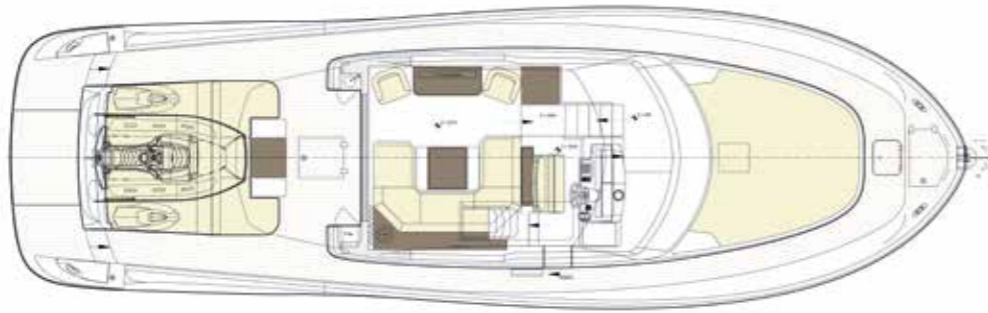
The internal and external layouts are available in several versions to suit the tastes and needs of owners.



# LAYOUTS

## MAIN DECK

Lower deck galley layout



## MAIN DECK

Main deck galley layout



## LOWER DECK

Version A



## LOWER DECK

Version B



## LOWER DECK

Version C







# MAKE YOUR SOLARIS POWER UNIQUE

---



## HULL AND DECK

---



WHITE



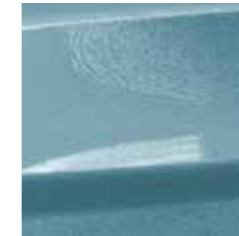
DOLOMIT SILVER



SOLARIS BLUE



JAZZY BLUE



SILVER LAKE



CHAMPAGNE

## WOODS

---



OAK (STD)



WALNUT (OPT)

## OUTDOOR UPHOLSTERY

---



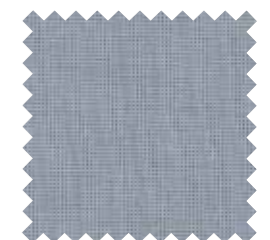
ICE CREAM



CREAM



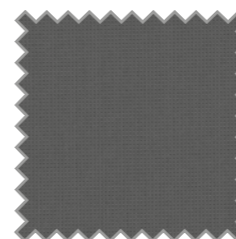
CAMEL



ALUMINIUM

## BIMINI

---



BLACK



IVORY



## RESPECT FOR THE ENVIRONMENT



INFUSION LAY-UP SYSTEM



FSC CERTIFIED WOOD SUPPLY

## STANDARD SPECIFICATIONS

### HULL AND DECK

- Stainless steel deck equipment
- Electric winch 2000 W windlass with telescopic hawse and remote control
- Galvanized delta anchor kg. 32 and 75mt 10mm chain
- Electric winch 2000 W windlass
- Teak bridge and stern platform
- Platform bathing ladder extractable made by stainless steel and teak
- Solid teak gunwale
- Closing cockpit stays
- Bow and stern sun bathing mattresses
- Frontal and lateral deckhouse crystal glued windows
- Acoustic alarm for water in stern and bow bilges
- Midboat bollards (1 each side)
- Fenders plugs
- Antifouling paint
- Stern steps courtesy lights
- Fire extinguisher
- Zinc anodes

### LOUNGE

- Rear closure with 3-door stainless steel sliding door
- Dinette with U-shaped sofa in fabric and extendable table
- Cabinet with piano and kitchen closet
- Armchairs nr. 2 on the sides of the cabinet (lower level kitchen version)
- Side curtains
- Led lights
- Ceilings with vinyl panels
- Night lights stairway access cabins

### HELM CONSOLE

- Control station with complete instrumentation with tridata DST 800 system
- Two seats pilot chair
- Throttle lever - electric inverter with Joystick
- 12" Volvo Penta navigation display
- Volvo Penta auto pilot
- Rudder indicator
- Echo sounder, log milometer and water temperature relevalor
- Fuel and water indicator
- VHF Garmin 210i con DSC system
- Compass
- 1/2 miles headlight
- Windscreen wipers with windscreen washer included
- Fire extinguisher

### COCKPIT

- Lifejacket peak with line and light buoy
- Seabob and tender garage with hydraulic door
- Mooring covers
- Cockpit fresh water sink

### OWNER'S CABIN

- Two wardrobes
- Sides windows with two openable portlights
- Reading lights
- Double bed with mattress
- Led lights
- Sides high cabinets
- Two seats and table under starboard portlight
- Vinyl covered ceiling
- Mirror
- Curtains

## GUEST'S CABIN

---

- Bathroom access
- Sides wardrobes with glove compartments (left and right)
- Two wardrobes
- Bed with storage base
- Bedside tables
- Sides windows with two openable portlights
- Two reading lights
- Double bed with mattress
- Led lights
- Fabric headboard
- Vinyl covered ceiling
- Mirror
- Curtains

## GUEST'S BATHROOM AND DAY

---

- Bathroom accessories
- Wardrobes and shelves
- Detached shower with crystal door
- Glass washbasin
- Led lights
- Openable portlight inside the shower cabin
- Two doors in the corridor and one in the bow cabin
- Mirror
- Pleated curtain
- Ceramic electric WC with control panel 3/4 full

## PROPULSION SYSTEM AND ENGINE ROOM

---

- VOLVO PENTA IPS 800 (441 Kw / 600 Hp) engines with manual interceptor system
- Electronic blowers (nr. 2)
- Volvo toolbox
- Hatch and stainless steel ladder
- Boiler 220V 60 lt.
- Automatic/manual fire extinguisher 12 kg.
- Fuel filters water separator
- Generator peak
- Inspection lights
- Bow watertight bulkhead
- Gasoline tank
- Diverter valve for emergency bilge output

## BOW LOCKER

---

- Chain peak
- Two 25mt mooring lines
- Winch remote control
- Inspection hatch
- Fresh water shower for chain washing
- Stainless steel bar for fendresses

## UNMOUNTED CREW CABIN

---

- Bow cabin portlight
- Access ladder
- Planking
- N. 2 storage shelves

## SYSTEMS

---

- Joystick docking assistance
- Remote control for engines power shut-off
- Fire extinguisher (one in each cabin)
- Electric equipment composed by: Kohler generator 9000W
- Generator battery 60Ah 12V
- Engines battery set 180Ah 24V
- Auxiliary services battery set 210Ah 12V
- Battery charge 50Ah 24V
- 24V illumination in cabins
- Battery cut off switch
- Parallel mechanical and electrical battery switch
- Black water output system with automatic electropump and 77 lt tank
- Bilges output system with 4 electropumps (3 automatics)
- Fresh water pump
- VHF transceiver system
- Lounge and lower deck entrance air conditioning system
- Electric WC system with fresh water and black water tank
- 50Ah quay plugs
- Cathodic protection with zinc anodes
- Grey water output system with electropump and two tanks. Tot. 240 lt

## GENERAL EQUIPMENTS

---

- 220 V quay cable
- 8 people Oceanus liferaft
- Fendresses n. 6

## DISCLAIMER AND COPYRIGHTS

---

Solaris Power Yachts reserves the right to change descriptions, modify, or substitute products in this catalogue without notice. Solaris is a registered trademark of Solaris

Yachts Srl, other names may be registered trademarks of their respective owners. Solaris Power © 2022. All rights reserved.

