

52

OPEN

solaris *POWER*

DAL 1974 PER CHI NAVIGA

TECHNICAL  
SPECIFICATIONS

# 52 OPEN

## TECHNICAL SPECIFICATIONS

LENGTH OVERALL	16,2 m / 53'
WATER LINE LENGTH	14,83 m / 48'65"
BEAM	4,95 m / 16'30"
DRAFT	1,19 m / 3'9"
APPROX. LIGHT DISPLACEMENT	17.700 kg / 39,022 lbs
APPROX. LOAD DISPLACEMENT	21.500 kg / 47,400 lbs
FUEL CAPACITY	2.000 L / 528 US gal
WATER CAPACITY	550 L / 145 US gal
ENGINES	2 x Volvo Penta D6-IPS650 353 kW / 480hp 3800 rpm Optional 2 x Volvo Penta D8-IPS800 441 kW / 600 hp 3000 rpm
MAX SPEED	30 kn - IPS 650 35 kn - IPS 800
CRUISING SPEED	24 kn - IPS 650 27 kn - IPS 800
CABINS	2 + 1 (optional)
BATHROOMS	2
MAX PERSONS CAPACITY	12
DESIGN	Brunello Acampora / Victory Design Solaris Power Design Team

# 52

COMING IN 2023

THE NEW WALKAROUND OPEN BOAT THAT  
WILL REDEFINE THE STANDARDS OF THE  
CATEGORY.

O  
P  
E  
N

# THE GREAT SEAGOING CAPABILITIES OF SOLARIS POWER

## SMOOTH SAILING THROUGH THE WAVES AND A DRY DECK IN CHOPPY SEAS

The sharp shape of the bow and the pronounced flare, softens the passage through the waves and keeps the deck dry.

## GREAT STABILITY WHILE CRUISING AND AT ANCHOR

The hull shape guarantees great stability and comfort when cruising and at anchor, without the need for stabilizers.

## LOW FUEL CONSUMPTION RESULTING IN EXCELLENT RANGE

The advanced studies on the shapes of the hull, ensure low fuel consumption, resulting in excellent range and reduced CO<sub>2</sub> emissions. One example, the 48 Open at a cruising speed of 26 knots only needs 4.8 litres per mile.

## EFFICIENT CRUISING BOTH IN DISPLACEMENT AND IN PLANING MODE

Unlike ordinary boats with planing hulls, Solaris Power are capable to cruise steadily and without roll even in displacement mode from 10 to 14 knots.



## THE LATEST PROPULSION TECHNOLOGY

Solaris Power yachts feature cutting-edge propulsion working in synergy with the shape of the hull. This is the outcome of intense collaboration between Victory Design and Volvo Penta. Since 2005 Brunello Acampora has been studying shapes that are optimised for the

IPS, including 'azimuth pods' for planing hulls; having found they generate huge performance improvements. Moreover, the compactness of the propulsion apparatus yields a noticeable increase of living space: the interiors of these boats compare favourably with much bigger

yachts, and make the tender easy to stow, launch and haul.

## EASY DOCKING THANKS TO THE JOYSTICK

Docking manoeuvres are simplified thanks to the joystick and the azimuth pods, even with a single person at the controls.

## LOW NOISE LEVEL AND ZERO VIBRATIONS

The absence of the rotating masses of the shaft line and the engine exhausts in the propeller pods ensure absence of vibrations and low noise.

## SPACIOUS AND WELL VENTILATED ENGINE ROOM

Offering easy access to the engine itself and to the other systems.

## INNOVATIONS FOR MORE ON-BOARD COMFORT

---



### WALKAROUND

---

The decks of all models include lateral walkways that afford easy and safe movement from bow to stern.



### FOLD-OUT BULWARKS

---

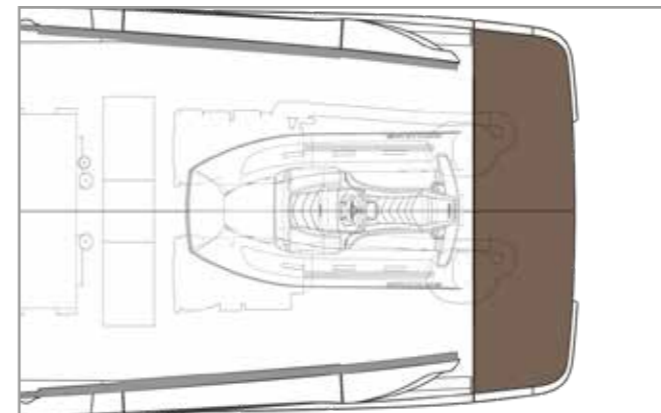
These can be opened for enhanced enjoyment of the cockpit, increasing its surface by 20%.



### TENDER GARAGE

---

Under the aft opening sundeck there is a large garage that can fit a waterjet tender and various water toys.



### LAYOUT IN MULTIPLE VERSIONS

---

The internal and external layouts are available in several versions to suit the tastes and needs of owners. A layout with three large cabins is also available.



### VERY LARGE SUNBEDS

---

All Solaris Power have the bow sundeck. Open models also offer an aft sundeck.

### HYDRAULIC GANGWAY

---

The hydraulic gangway turns into a comfortable swim ladder.

### TENDER LIFT STERN PLATFORM

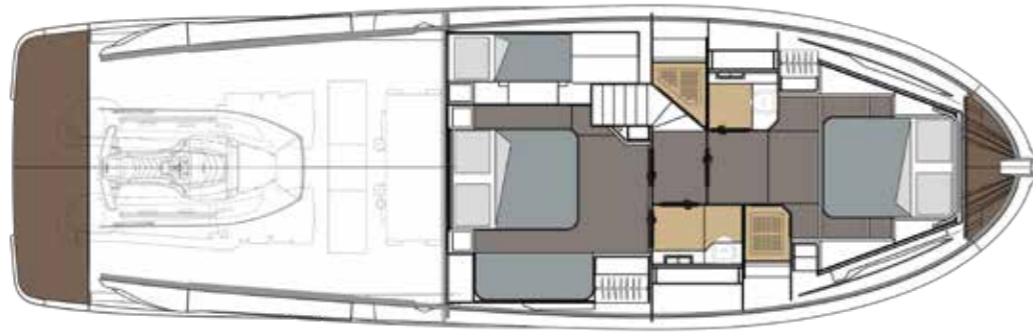
---

It can be used during all nautical activities on board: lifting and launching a tender, a jet-ski or sea bobs, as well as a swimming deck.

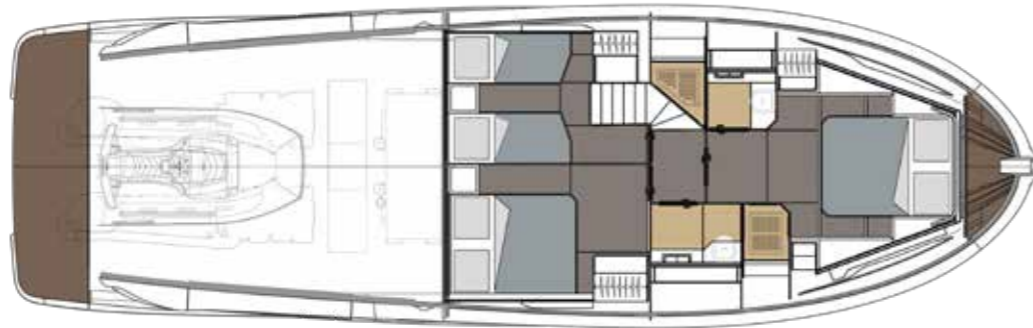
# LAYOUTS

---

LOWER DECK  
Version A (standard)



LOWER DECK  
Version B (optional)



# 3 OPTIONS FOR THE DECK LAYOUT

---

MAIN DECK A



MAIN DECK B



MAIN DECK C





solaris power

CINQUANTADUE



# MAKE YOUR SOLARIS POWER UNIQUE



## HULL AND DECK



WHITE



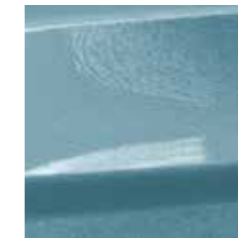
EXTREME SILVER



SOLARIS BLUE



JAZZY BLUE



SILVER LAKE



CHAMPAGNE

## WOODS



OAK (STD)



WALNUT (OPT)

## OUTDOOR UPHOLSTERY



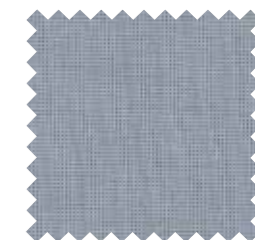
ICE CREAM



CREAM

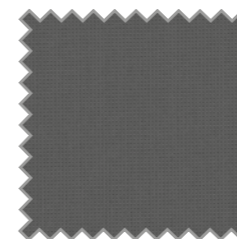


CAMEL



ALUMINIUM

## BIMINI



BLACK

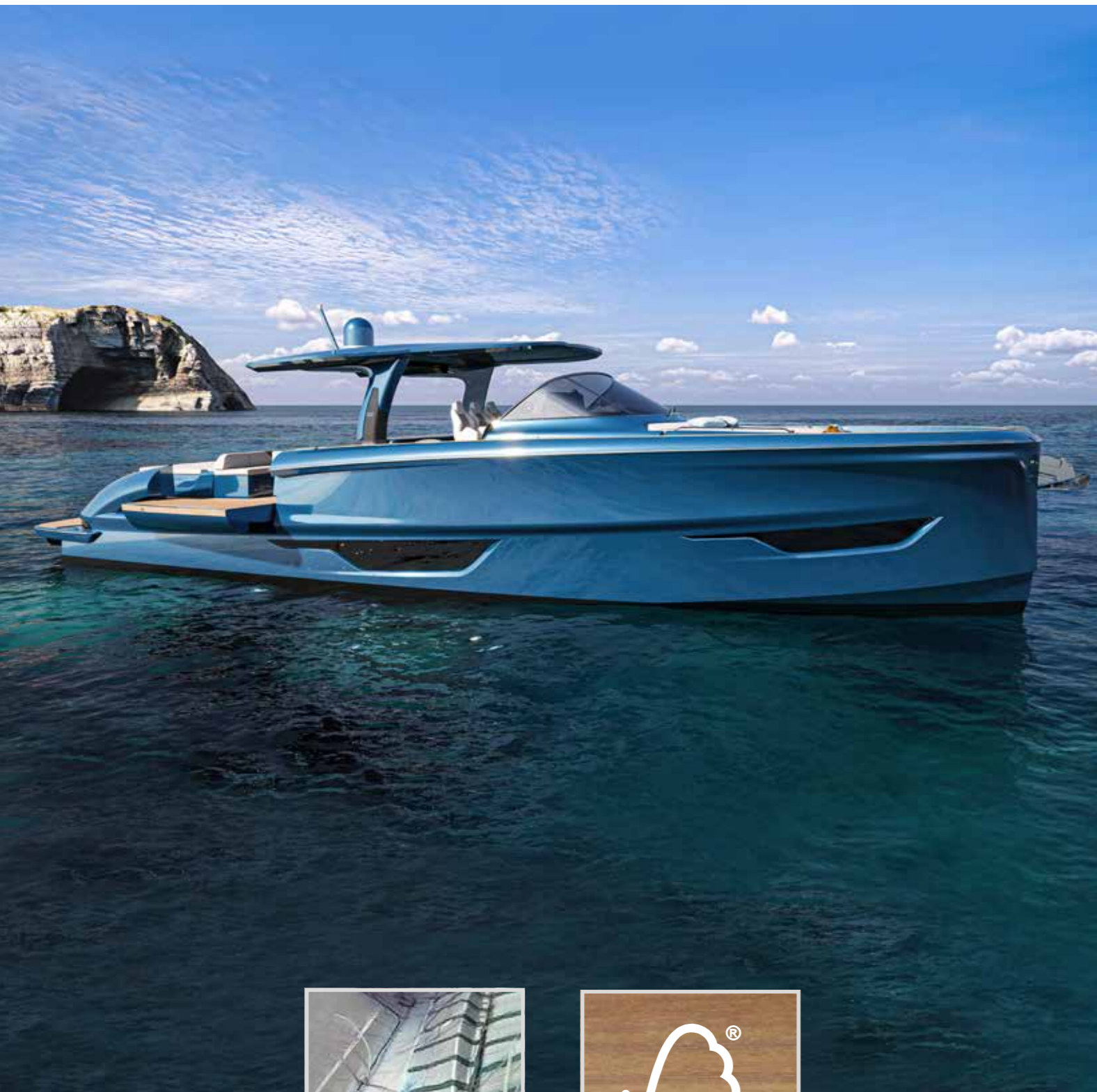


IVORY



## RESPECT FOR THE ENVIRONMENT

---



INFUSION LAY-UP SYSTEM



FSC CERTIFIED WOOD SUPPLY

## STANDARD SPECIFICATIONS

---

### HULL AND DECK

---

- Stainless steel deck equipment
- Electric winch windlass with telescopic hawse and remote control
- Galvanized delta anchor and 50mt 10mm chain
- Platform bathing ladder extractable made by stainless steel and teak
- Bow and stern sun bathing mattresses
- Glass and stainless steel windscreen
- Sliding crystal door for cabins access
- Acoustic alarm for water in stern and bow bilges
- Midboat bollards (1 each side)
- Fenders plugs
- Stern steps courtesy lights
- Fire extinguisher
- Zinc anodes

### HELM CONSOLE

---

- Control station with complete instrumentation
- Pilot chairs
- Throttle lever - electric inverter with Joystick
- Display 12"
- Volvo Penta auto pilot
- Rudder indicator
- Echo sounder
- Fuel and water indicator
- VHF Garmin
- Compass

### COCKPIT

---

- Dinette with large sofas and table
- Stern sundeck with relax area
- Seabob and tender garage with hydraulic door
- Lifejacket peak with line

### OWNER'S CABIN

---

- Bathroom access
- Sides wardrobe with glove compartments
- Sides windows
- Reading lights
- Double bed with mattress
- Big stowage
- Bedside Table
- Led lights
- Vinyl covered ceiling
- Mirror
- Curtains

### OWNER'S BATHROOM

---

- Bathroom accessories
- Wardrobe and shelves
- Detached shower with crystal door
- Washbasin
- Led lights
- Openable portlight
- Mirror
- Pleated curtain
- Ceramic electric WC and control panel 3/4 full

## GUEST'S CABIN 1

---

- Sides wardrobe with glove compartments
- Sides windows
- Reading lights
- Single bed with mattress (nr.2)
- Big stowage
- Bedside Table

## GUEST'S CABIN 2

---

- Sides wardrobe with glove compartments
- Sides windows
- Reading lights
- Single bed with mattress (nr.2)
- Big stowage
- Bedside Table
- Led lights
- Vinyl covered ceiling
- Mirror
- Curtains

## GUEST'S BATHROOM

---

- Bathroom accessories
- Wardrobe and shelves
- Detached shower with crystal door
- Washbasin
- Led lights
- Openable portlight
- Mirror
- Pleated curtain
- Ceramic electric WC and control panel 3/4 full

## PROPULSION SYSTEM AND ENGINE ROOM

---

- VOLVO PENTA IPS 650 (353 Kw / 480 Hp) engines with manual interceptor system
- Electronic blowers (nr. 2)
- Volvo toolbox
- Hatch and stainless steel ladder
- Boiler
- Automatic/manual fire extinguisher
- Fuel filters water separator
- Generator peak
- Inspection lights
- Bow watertight bulkhead
- Gasoline tank

## BOW LOCKER

---

- Chain peak
- Winch remote control
- Inspection hatch
- Fresh water shower for chain washing
- Stainless steel bar for fendresses

## UNMOUNTED CREW CABIN

---

- Stern cabin portlight
- Access ladder
- Planking
- Storage shelves

## SYSTEMS

---

- Joystick docking assistance
- Remote control for engines power shut-off
- Fire extinguisher (one in each cabin)
- Generator battery
- Engines battery
- Auxiliary services battery
- Battery charge
- Illumination in cabins
- Battery cut off switch
- Parallel mechanical and electrical battery switch
- Black water output system with automatic electropump
- Bilges output system with 3 electropumps

- Fresh water pump
- VHF transceiver system
- Lounge and lower deck entrance air conditioning system
- Electric WC system with fresh water
- Cathodic protection with zinc anodes
- Grey water output system with electropump

## GENERAL EQUIPMENTS

---

- Quay cable
- Fendresses n. 6

## HARD TOP

---

- Mast with navigation lights and flag
- Acoustic alarm
- Navigation lights

## OUTDOOR KITCHEN

---

- Induction cooktop
- Worktop
- Fridge
- Sink
- Dustbin
- Stainless steel basin
- Led lights
- Drawer and closets

## DISCLAIMER AND COPYRIGHTS

---

Solaris Power Yachts reserves the right to change descriptions, modify, or substitute products in this catalogue without notice. Solaris is a registered trademark of Solaris

Yachts Srl, other names may be registered trademarks of their respective owners. Solaris Power © 2023. All rights reserved.

