

# 48

## EUROPEAN YACHT OF THE YEAR 2020

FLARED BOW FOR SMOOTH SAILING  
THROUGH THE WAVES. GREAT STABILITY  
WHILE CRUISING AND AT ANCHOR.  
THE ONLY OPEN BOAT WITH A TRUE  
WALKAROUND DECK. FEATURING THE SAME  
CABIN SPACE OF A CONVENTIONAL CABIN  
CRUISER.

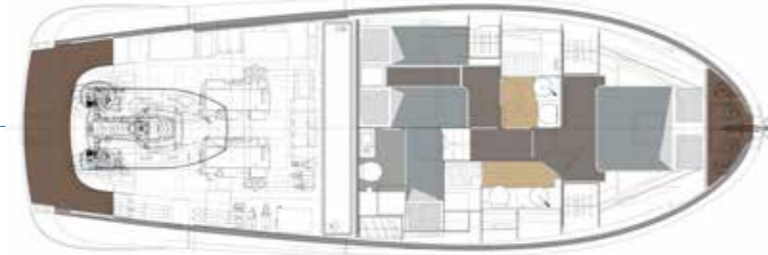
O  
P  
E  
N



MAIN DECK



LOWER DECK  
Version A



LOWER DECK  
Version B



LOWER DECK  
Version C



## 48 OPEN

### TECHNICAL SPECIFICATIONS

LENGTH OVERALL	14,86 m / 48'74"
WATER LINE LENGTH	13,40 m / 43'95"
BEAM	4,87 m / 15'97"
DRAFT	1,05 m / 3'44"
APPROX. LIGHT DISPLACEMENT	14.000 kg / 30,864 lbs
APPROX. LOAD DISPLACEMENT	16.800 kg / 37,037 lbs
FUEL CAPACITY	1.500 L / 396 US gal
WATER CAPACITY	430 L / 114 US gal
ENGINES	2 x Volvo Penta D6 IPS 600 320 kW / 435 hp 3500 rpm 2 x Volvo Penta D6 IPS 650 353 kW / 480 hp 3800 rpm
MAX SPEED	34 kn 36 kn
CRUISING SPEED	23 kn 26 kn
CABINS	1/2
BATHROOMS	1 + 1
MAX PERSONS CAPACITY	12
DESIGN	Brunello Acampora / Victory Design Cav. Norberto Ferretti Solaris Power Design Team

[WWW.SOLARISPOWER.COM](http://WWW.SOLARISPOWER.COM)

#### DISCLAIMER AND COPYRIGHTS

Solaris Power Yachts reserves the right to change descriptions, modify, or substitute products in this catalogue without notice. Solaris is a registered trademark of Solaris Yachts Srl, other names may be registered trademarks of their respective owners.

Solaris Power © 2023. All rights reserved.  
Rendering and illustrations: Victory Design  
Photo: A. Muscatello  
Graphic design: DL&A Agency

# FOR SAILORS ONLY SINCE 1974

**solaris***POWER*  
DAL 1974 PER CHI NAVIGA



# 48 O P E N



### SINCE 1974 WE BUILD BOATS FOR PASSIONATE MARINERS

Since its foundation in 1974, the philosophy of Solaris has been to build solid and safe marine sailboats according to the highest quality standards, allowing to experience the boat in the maximum comfort even in all sea and wind conditions. Solaris is the European leader in quality sailing yachts, from 40 to 110 feet, and has remained one of the few shipyards in the world still able to combine cutting-edge construction technology with the traditional craftsmanship of finishing and details.

Since 2008 Solaris has entered the power boats sector, applying the same philosophy that has always distinguished Solaris boats: quality, seaworthiness, elegance.

The Solaris Power represent a new generation of motor boats, offering comfort, stability and excellent performance in both displacement and planing. The particular shape of the hull guarantees high stability at anchor. The deep V-shaped bow makes the passage on the wave very smooth and leaves dry the deck even in rough seas. The Volvo IPS engines and the particular geometry of the CFD designed hull ensure the Solaris Power boats low fuel consumption and great endurance. Thanks to the supplied joystick mooring maneuvers are very easy also in narrow waters.



#### TRADITIONAL CRAFTSMANSHIP

There are not many boatyards left today, that can combine leading-edge technology with traditional craftsmanship of details and finishing as Solaris Yachts does.



#### THE LOBSTER BOAT HERITAGE

Solaris was among the first in Europe to build a lobster boat, the 47-foot Express Cruiser, by Bruce King, designer of the famous American Hinckley line.

